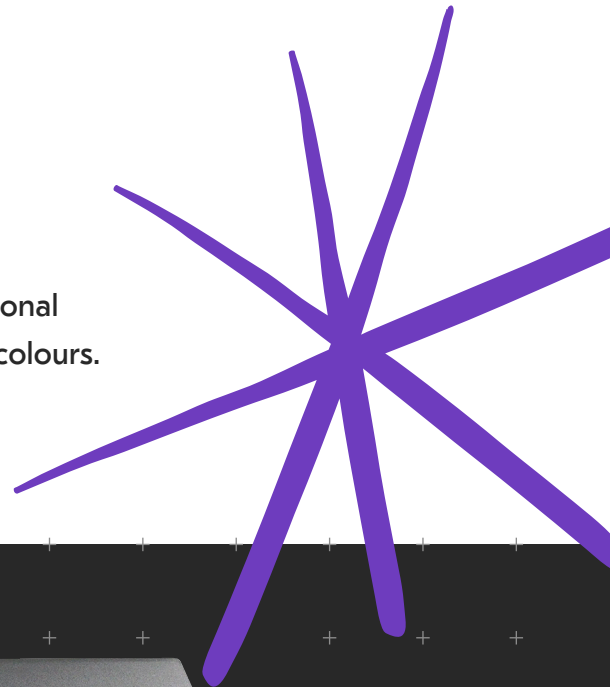


Professional colour multi-talent.

The top device of the ECOSYS series combines the best colour quality with the lowest of costs – and it will ease your workflow significantly, too. Rest assured, it is the perfect 3-in-1 multifunctional partner for your business and will offer you a future of brilliant colours.



ECOSYS M5526cdn/A
(Print, Copy, Scan)



Up to 26 pages per minute in A4

1,200 dpi printing quality

Dual scan document processor

ECOSYS M5526cdn

Specifications

ECOSYS

ECOSYS stands for ECOlogy, ECONomy and SYStem-printing. With their long-life components, ECOSYS devices are designed to maximise durability and minimise the total cost of ownership with regard to maintenance, administration and consumables. The cartridge-free system means that toner is the only consumable. The modular design concept allows you to add workflow enhancing functions as required. Integrated system software provides long-term cross network compatibility. KYOCERA's long-life components cost you and the environment less.

Environmental print features

Duplex print mode (Double sided printing), N-Up printing mode (N pages on 1 sheet), Toner save mode (Draft print mode), Quiet mode (reduced print speed).

USB Host Interface for USB Flash Memory

Documents can be printed directly from a USB Flash Memory (e.g. USB stick) via the USB host interface. The documents stored as PDF, XPS, TIFF or JPEG are selected directly via the printer's control panel. No computer is required.

ECOSYS M5526cdn/A & ECOSYS M5526cdw/A

GENERAL

Technology: KYOCERA ECOSYS, Colour Laser

Control panel display: 10.9 cm (4.3 inch) full colour touch panel display

Engine speed: Up to 26 pages A4 per minute in colour and b/w
Resolution: 1,200 x 1,200 dpi print at reduced speed, multibit technology for print quality of up to 9,600 x 600 dpi (print), 600 x 600 dpi, 256 greyscales per colour (scan/copy)

Warm-up time: Approx. 29 seconds or less

Time to first print: Approx. 9.5/10.5 seconds or less in b/w/colour

Time to first copy: Approx. 8/10 seconds or less in b/w/colour

CPU: 800MHz

Memory: Standard 512 MB, max. 1,536 MB

Standard interface:
ECOSYS M5526cdn/A: USB 2.0 (Hi-Speed), USB Host Interface, Gigabit Ethernet (10BaseT/100BaseTX/1000BaseT), Slot for optional SD/SDHC-Card

ECOSYS M5526cdw/A: USB 2.0 (Hi-Speed), USB Host Interface, Gigabit Ethernet (10BaseT/100BaseTX/1000BaseT), Wireless LAN, Slot for optional SD/SDHC-Card

Dimensions (W x D x H): Main unit: 417 x 429 x 495 mm

Weight: Main unit: Approx. 26 kg

Power source: AC 240 V, 50 Hz

Power consumption:

Copy/Print BW/colour: 375 W

Ready mode: 41 W

Sleep-mode: 1 W

Noise (Sound pressure level: ISO 7779/ISO 9296):

Copy/Print colour: 49/49 dB(A) LpA

Ready/Standby mode: 30 dB(A) LpA

Sleep mode: Immeasurably low

Safety standards: AS/NZ3260

This unit is manufactured according to ISO 9001 quality standard and ISO 14001 environmental standard.

PAPER HANDLING

All paper capacities quoted are based on a paper thickness of max. 0.1 mm. Please use paper recommended by KYOCERA under normal environmental conditions.

Input capacity: 50-sheet multi-purpose tray; 60–220g/m²; A4, A5, A6, B5, B6, Letter, Legal, Custom (70 x 148mm–216x 356mm)

250-sheet universal cassette; 60–163 g/m²; A4, A5, A6, B5, B6, Letter, Legal, Custom (105 x 148–216 x 356 mm). Max. input capacity with options: 550 sheets

Duplex functionality as standard: Double-sided printing: 60–120 g/m²; A4, A5, B5, Letter, Legal Dual scan document processor: 50-sheet, 50–160 g/m², A4, A5, A6, B5, Letter, Legal, Custom (105 x 148 to 216 x 356 mm)

Output capacity: Max. 150 sheet face down with paper full deflection

PRINT FUNCTIONS

Controller language: PRESCRIBE IIc

Emulations: PCL 6 (PCL 5c/PCL-XL), PostScript 3 (KPD 3), PDF Direct Print, XPS Direct Print

Operating systems: All current Windows operating systems, MAC OS X Version 10.8 or higher, Unix, Linux as well as other operating systems on request

Fonts/barcodes: 93 scalable fonts for PCL/PostScript, 8 fonts for Windows Vista, 1 bitmap font, 45 barcodes (e.g. EAN8, EAN13, EAN128) with automatic generation of checkmarks as well as support of two-dimensional barcodes PDF-417 under PRESCRIBE (PCL and other barcodes available as an option)

COPY FUNCTIONS

Max. original size: A4/Legal

Continuous copying: 1–999

Zoom range: 25–400 % in 1 % steps

Pre-set magnification ratios: 7 Reductions/5 Enlargements

Exposure mode: Manual: 9 steps

Image adjustments: Text + Photo, Photo, Text, Map, Printed document

Features: Auto Colour Mode, Scan-once-copy-many, electronic sort, 2in1, 4in1, ID-card copy, priority print, program, auto duplex copy, continuous scan, auto cassette change, copy density control

SCAN FUNCTIONS

Functionality: Scan-to-e-mail (SMTP), Scan-to-FTP (FTP over SSL), Scan-to-SMB, Scan to USB Host, TWIN scan (USB, network), WSD (WIA) scan (USB, network)

Scan speed: 30 ipm (300 dpi, A4, b/w, simplex), 23 ipm (300dpi, A4, colour, simplex), 24 ipm (300 dpi, A4, b/w, duplex), 16ipm (300 dpi, A4, colour, duplex)

PRESCRIBE IIc

With the Kyocera page design and control language PRESCRIBE IIc, even complex graphics, logos and forms (multipart forms) can be created independently on the system and saved and updated in the printer. Consequently, integration into print files no longer applies. They are only accessed as required and therefore relieve the load on the network.

Status Monitor and Command Centre

The Status Monitor shows the current printers condition and gives direct access to the Command Centre for the modification of settings that are not contained in the drivers (e.g. network settings, adjustment of sleep mode or blocking of the control panel).

KYOCERA NetViewer

KYOCERA NetViewer enables complete monitoring and control of all ECOSYS printers and digital KYOCERA multifunction units from any Windows® PC and thus provides ideal network administration. It also supports the standardised SNMP protocol.

Scan resolution: 600, 400, 300, 200 dpi (256 greyscales per colour)

Max. scan size: A4, Legal

Original recognition: Text + Photo, Photo, Text, Light Text, Text (for OCR)

Scan file formats: TIFF, PDF, PDF/A, high compression PDF, encrypted PDF, JPEG, XPS

Compression method: MMR/JPEG

Features: Integrated address book, Active directory support, encrypted data transfer, Blank sheet skip

CONSUMABLES

Average continuous toner yield in accordance with ISO19752 Mono/ISO19798 Colour

Toner-Kit TK-5244K: black toner yield 4,000 pages A4 **Starter toner:** black toner yield 1,200 page A4 Toner-Kit

TK-5244C, TK-5244M, TK-5244Y: cyan, magenta, yellow toner yield 3,000 pages A4

Starter toner: cyan, magenta, yellow toner yield 1,200 pages A4

Starter toner: cyan, magenta, yellow toner yield 1,200 pages A4

Starter toner: cyan, magenta, yellow toner yield 1,200 pages A4

Starter toner: cyan, magenta, yellow toner yield 1,200 pages A4

Starter toner: cyan, magenta, yellow toner yield 1,200 pages A4

Starter toner: cyan, magenta, yellow toner yield 1,200 pages A4

Starter toner: cyan, magenta, yellow toner yield 1,200 pages A4

Starter toner: cyan, magenta, yellow toner yield 1,200 pages A4

Starter toner: cyan, magenta, yellow toner yield 1,200 pages A4

Starter toner: cyan, magenta, yellow toner yield 1,200 pages A4

Starter toner: cyan, magenta, yellow toner yield 1,200 pages A4

Starter toner: cyan, magenta, yellow toner yield 1,200 pages A4

Starter toner: cyan, magenta, yellow toner yield 1,200 pages A4

Starter toner: cyan, magenta, yellow toner yield 1,200 pages A4

Starter toner: cyan, magenta, yellow toner yield 1,200 pages A4

Starter toner: cyan, magenta, yellow toner yield 1,200 pages A4

Starter toner: cyan, magenta, yellow toner yield 1,200 pages A4

Starter toner: cyan, magenta, yellow toner yield 1,200 pages A4

Starter toner: cyan, magenta, yellow toner yield 1,200 pages A4

Starter toner: cyan, magenta, yellow toner yield 1,200 pages A4

Starter toner: cyan, magenta, yellow toner yield 1,200 pages A4

Starter toner: cyan, magenta, yellow toner yield 1,200 pages A4

Furthermore, this device contains a long-yield toner with a capacity of up to 3,000 pages in colour – offering unrivalled low costs per page. Rest assured, it is the perfect multifunctional partner for your business and will offer you a future of brilliant colours.



Brisbane Business Equipment

Unit 1, 747 Fairfield Road,
Yerrongpilly 4105

Ph (07) 32559500

email: sales@bbe.net.au



JUNE2022/ECOSYSM5526cdn_A/M5526cdw_A

kyoceradocumentsolutions.com.au