



The Evolution Continues in Colour

Magnify your message with more impact.



The new Kyocera A3 Series



Unrivalled productivity with superior colour

Speeds of 40, 50, 60 & 70ppm in BW/Colour

4800 x 1200 dpi resolution


Z-Fold/Inserter Unit finishing capabilities

The most up-to-date security enhancements

Make Change Your Edge

The new Kyocera TASKalfa A3 series was created for a new landscape of work. This range of robust, versatile devices has been built to last. Combining cutting-edge technology and Kyocera's expertise, these intuitive, user-friendly colour devices will drive your productivity to new levels.

Our new colour systems!

					
					
	TASKalfa 4054ci	TASKalfa 5054ci	TASKalfa 6054ci	TASKalfa 7054ci	
	Print Speeds	40 ppm	50 ppm	60 ppm	70 ppm
	Scan Speeds	up to 274 ipm	up to 274 ipm	up to 274 ipm	up to 274 ipm
	Document Processor	up to 320 sheets	up to 320 sheets	up to 320 sheets	up to 320 sheets
	Toner Capacity* (B&W/colour)	30,000/20,000	40,000/24,000	40,000/24,000	40,000/24,000
	Enhanced Security Features	Encrypted data with authentication technology and automatic security certification checks. Supports FIPS 140-2 and HCD-PP certification.			

*Based on 5% coverage



Print in Flying Colours

Dive into a world of exquisite image quality. The devices in this new series offer superb definition, both in monochrome and full colour. Not only will time-pressured users benefit from the **Super Resolution** feature, that improves the quality of images at the touch of a button, but they can also opt for **High-Impact** and **Vibrant Printing** (4800 x 1200 dpi resolution).

Alongside dramatic colour, crisp black & white, and detailed graphics printing, these devices offer top-of-the-range scanning, input, and professional finishing options. In short, this new series goes beyond the requirements of even the most demanding workplace.

For outstanding image reproduction, look no further.

New Heights of Productivity

Now more than ever, companies are seeking devices that are more agile and robust, and ever-smarter ways of working. These new devices empower companies to maximise productivity like never before.

Re-energise the Way You Work



High Performance

Fast print and scan speeds for maximum efficiency.



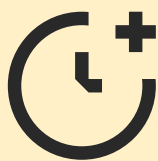
Paper Capacity

Less time filling paper trays means more time for quality work.



Digitisation

Transform your workflows faster while pivoting to a paperless workspace.



Durability

Long-lasting toners ensure professional quality that lasts.



Proven Quality

Our devices have earned industry recognition for their reliability.



Optimal Security

Enjoy some of the most advanced security technology on the market today.

This new TASKalfa series takes a holistic approach to workflows in the **modern workplace**.

By addressing and tackling pains at each stage of the document lifecycle, we have delivered a range of devices for today's businesses. A TASKalfa device can help turn past weaknesses and blind spots into **new value-adding opportunities for your organisation**.

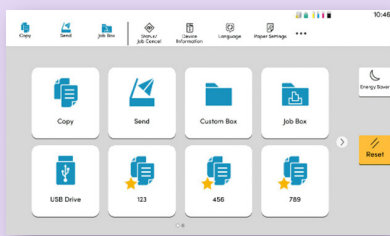
We have taken the complex and made it simple. As it should be.

An Effortless User Experience

Over-complicated printer controls drain valuable time and can impact your overall productivity. The new TASKalfa series puts an end to that with a user interface that has been totally redesigned to **minimise confusion** and **maximise your capabilities**, for printing that is easy and intuitive.

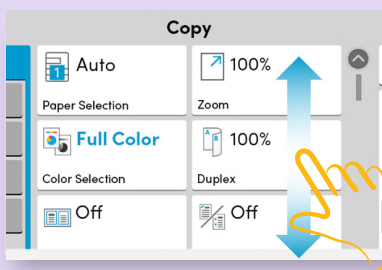
Meet the New User Interface

With standard colours and easy to understand icons, carrying out tasks at the printer has never been simpler.



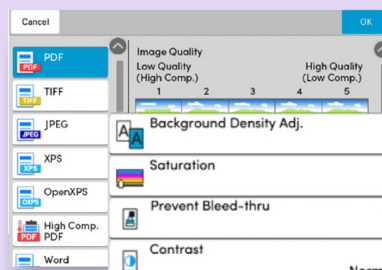
Simple

Standardised icons and graphics make navigation intuitive and easy.



Intuitive

Emphasise important information and use gestures to select target items.



Efficient

Work quicker with fewer steps, along with quick-switch settings.

Higher Risks Mean Better Solutions

Security is a greater concern than ever before, with more large-scale cyberattacks hitting the headlines every day. Businesses must preemptively prepare for potential risks by equipping themselves with solutions that ensure data and networks are constantly protected.

These new devices come with a whole range of new security enhancements:



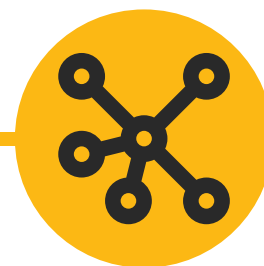
Certificates

Devices keep themselves up to date with latest security certificates, and use encrypted communications to validate their certificates. (SCEP & OCSP/CRL).



Encryption

Protect emails with authentication, digital signatures and encryption. A faster way to keep data secure in your network (S/MIME & TLS version 1.3).



Device Management

You will have the ability to log security events and monitor for malware, data leakage and other security breaches. (SIEM).

Kyocera's up-to-date security compliance shows our commitment to the highest standards of information security management.

Finish in Style

With the new TASKalfa A3 series, **it's your documents your way.**

Today's workspaces demand greater agility and media flexibility, and Kyocera has risen to the challenge with brand-new finishing capabilities for 60/70ppm devices.



ZF-7100 Z-Fold Option

This functionality enables you to add "z-folded" sheets into your documents. This includes diagrams, charts and other larger sheets that need to be folded into a 8.5" x 11" sized booklets. This can also be particularly useful for standalone applications when producing invoices, marketing flyers and brochures.

Staple Finishing Option

These new devices boasts 4,000 sheet staple finisher options that support 65 and 100 sheet stapling and 2/3 hole-punching for clean, professional looking output so that more jobs can be kept in-house even in the most demanding of work environments.

IS-7100 Inserter Unit Option

This presence of two trays enables users to feed pre-printed pages as potential front or back covers or sheet inserts. The Inserter Unit avoids the need for pre-printed sheets to go through the high-temperature fusing process at the MFP, thus ensuring that the pre-printed sheets won't get destroyed or melted.

Evolving Our Future

Keep your productivity high and sustainability higher.

Kyocera was built upon the principle of doing the right thing as a human being. In everything we do, we try to balance ecology and economy, and seek to make all of our growth sustainable.

This means that you can rest easy knowing that, while you're maximising productivity and efficiency within your business, you're also reducing your environmental impact.

Our TASKalfa devices makes it possible to combine eco-friendly printing with greener and more intelligent digital processes, so that your daily work has a reduced carbon footprint. Your growth doesn't have to cost the environment.

**We do more than just talk about sustainability.
Our actions speak for us.**



**New Toner Design Helps
Reduce Energy Consumption**



**Energy-saving
Sleep Mode**



**Increased
Eco-credentials**



**Increased
Productivity**



Your Pains. Our Solutions.

With the new TASKalfa series you get:



User-friendly Interface

Tablet-like functionality makes life easy. No more frustration at the printer!



Fast Print and Scan Speeds

Get the documents you want when you need them and watch your productivity soar.



Smart and Scalable Solutions

Get your team working as one with solutions that help workflows run smoothly and efficiently.



Devices You Can Rely On

Kyocera devices are built to last the test of time. Get ready to say goodbye to costly downtime!



Optimal Security

With in-depth security capabilities you can rest assured that your confidential data is safe with Kyocera.





TASKalfa 4054ci



A3 Colour Multifunctional

40/40 ppm for A4 (Colour/Mono)

4,800 x 1,200 dpi resolution

Digital transformation made secure and simple

The TASKalfa 4054ci is the ideal solution for complex office information management. Featuring enhanced security options, high quality printing, flexible paper-handling, and finishing options, this device is your ideal work partner.

Specifications

GENERAL

KYOCERA TASKalfa Laser Colour Multifunctional, HyPAS™ solution platform

Operation panel: 256.5 mm (10.1 inch) full-colour touch panel display, speaker for job notification, 15° - 90° swivel mounted

Engine speed: Up to 40/20 pages A4/A3 per minute, Duplex print/copy speed: 40 pages A4 per minute

Resolution: 4800dpi equivalent x 1200dpi (print) 600 dpi x 600 dpi (scan/copy)

Warm-up time: 17 seconds or less

Time to first print: 51/6.5 seconds or less in Mono/Colour

Time to first copy: 51/7.4 seconds or less in Mono/Colour (DP), approx. 4.5/5.9 or less in Mono/Colour (Platen)

CPU: ARM A53 (Quad Core) 1.6GHz

Memory: Standard 4GB +64GB SSD, Optional 320GB or 1TB HDD

Standard interfaces: USB 3.0 (Super-Speed USB), 4 x USB Host Interface, Gigabit Ethernet (10BaseT/100BaseTX/1000BaseT, IPv6, IPv4, IPsec, 802.3az support), optional Wi-Fi (IEEE 802.11a/b/g/n/ac), 2 eUIC slots for optional internal print server or for optional fax system, slot for optional Wireless LAN, Slot for optional SD Card, NFC tag

Dimensions (W x D x H): 602 mm x 665 mm x 790 mm

Weight: Approx. 95 kg

Power source: AC 220–240 V, 50/60 Hz

Power consumption: Print Mode: 660 W; Copy Mode: 660 W;

Ready Mode: 45 W; Lower Mode: 40 W Sleep Mode: 0.5 W

Noise (surface sound pressure level: ISO 7779 measurement distance of 1 meter)

Copying/Printing Mode in Colour: 70 dB(A) LpA

Stand-by: 35 dB(A)

Safety standards: TÜV/GS, CE. This unit is manufactured according to ISO 9001 quality standard and ISO 14001 environmental standard.

PAPER HANDLING

All paper capacities quoted are based on paper thickness of max. 0.11 mm. Please use paper recommended by Kyocera under normal environmental conditions.

Input capacity: Multi-purpose tray: 150 sheets, 52 - 300 g/m², (Banner 136–163 g/m² A6R - SRA3 (320 x 450 mm), Banner max. 304.8 x 1,220 mm, Standard universal paper cassette: 2 x 500 sheet 52 - 300 g/m², Upper cassette A6R up to A4R, lower cassette A6R up to SRA3, Max. input capacity with options: 7150 sheets A4

Duplex: Standard supports 60–256 g/m², SRA3 to A6R

Output capacity: Standard 500 sheets face down, max. 5,000 sheets

PRINT FUNCTIONS

Controller language: PRESCRIBE

Emulations: PCL6 (PCL5c / PCL-XL), KPDL3 (PostScript 3 compatible), PDF Direct Print, XPS Direct Print and OpenXPS

Operating systems: All current Windows operating systems, Chrome OS, MAC OS X Version 10.9 or higher, Unix, Linux as well as other operating systems on request

Fonts/barcodes: 93 outline fonts (PCL), 136 fonts (KPDL 3), 4 fonts (Calibri), 4 fonts (Cambria), 1 Bitmap font, 45 types of one-dimensional barcodes, 1 type of two-dimensional barcode (PDF417)

Print features: Encrypted PDF 2.0 Direct Print, IPP printing, e-mail, printing, WSD print, secure printing via SSL, IPsec, SNMPv3, quick copy, proof and hold, private print, job storage and job management functionality, Super Resolution

Mobile printing support: AirPrint, Mopria, NFC, Direct Wi-Fi (optional), MyPanel and KYOCERA Mobile Print app for iOS and Android, Microsoft Cloud printing

COPY FUNCTIONS

Max. original size: A3/Ledger

Continuous copying: 1–9,999

Zoom range: 25–400 % in 1 % steps

Preset magnification ratios: 5 Reductions/5 Enlargements

Exposure mode: Manual: 17 steps

Image adjustments: Text + Photo, Photo, Text, Diagram/Map

Features: Scan-once-copy-many, electronic sort, Zin1, 4in1, image repeat, page numbering, cover mode, booklet copy, interrupt copy, form overlay, margin shift, auto cassette change, skip blank page, ID copy, Handwriting erase and highlight

SCAN FUNCTIONS

Functionality: Scan-to-email, Scan-to-FTP, Scan-to-SMB 3.0, Scan-to-USB Host, Scan-to-box, Network TWAIN, WSD scan (WIA Driver Network), DFS Scan, DSM Scan

Scan speed: 274 ipm (300 dpi, A4, duplex, with DP-7160/7170)

Scan resolution: 600, 400, 300, 200 dpi, 256 greyscales per colour (1,200 dpi via TWAIN and WIA driver only)

Max. scan size: A3, Ledger

Original recognition: Text, photo, text + photo, Light Text / Fine Line, optimised for OCR

File types: TIFF, PDF, PDF/A, JPEG, Open XPS, Encrypted PDF, High compression PDF, PDF/A-1a/b, PDF/A-2a/b/u, Searchable PDF (Option), MS Office file (Option)

FAX FUNCTIONS (OPTIONAL)

Compatibility: ITU-T Super G3

Modem speed: Max. 33.6 kbps

Transmission time: Less than 3 seconds (JBIG)

Scanning speed: 2.0 seconds or less

Maximum original size: A3/Ledger, Banner: 1,600 mm

Compression method: JBIG, MMR, MR, MH

Features: Network faxing, rotate transmission, rotate reception, encrypted transmission and reception, duplex fax reception, memory reception, mailbox, remote diagnostics, polling transmission and reception, broadcast, Optional Internet-fax, dual fax with second fax system 12

CONSUMABLES

Average continuous toner yield in accordance with 5% coverage A4

TK-8549K Toner Kit: Microfine toner black for 30,000 pages A4

TK-8549C, TK-8549M, TK-8549Y Toner Kits: Microfine toner cyan, magenta, yellow for 20,000 pages A4

Staples: SH-10: 5,000 x 3 staples for BF-730, DF-7100, DF-7120, BF-9100, SH-12: 5,000 x 3 staples for DF-7140, SH-14: 5,000 x 5 staples for DF-7150

WT-8500: Waste Toner Bottle: 40,000 sheets (in accordance with 5% coverage, b/w : colour = 7:3)

OPTIONS

Fax System 12

Internet Fax Kit (A) AC

Scan Extension Kit (A) AC: Scan to searchable PDF solution (embedded OCR), convert to PDF or MS Office (docx, xlsx, pptx)

Printing System 17: Fiery Controller

Printing System Interface Kit 15B: Interface board for Fiery

DP-7150: Document Processor (Reversing), 140 sheets, 35–160 g/m² (simplex), 50–120 g/m² (duplex), A6R–A3, Banner up to 1,900 mm

DP-7160: Document Processor (one-path duplex scanning), 320 sheets at 50 - 80 g/m², 35–220 g/m² (simplex), 50–220 g/m² (duplex), A6R–A3, Banner up to 1,900 mm

DP-7170: Document Processor (one-path duplex scanning with ultrasonic sensor), 320 sheets at 50 - 80 g/m², 35–220 g/m² (simplex), 50–220 g/m² (duplex), A6R–A3, Banner up to 1,900 mm

DT-730(B): Document tray

PF-7120: Side Deck: 3,000 sheets, A4, 60–300 g/m²

PF-7140 Paper feeder: 2 x 500 sheets, 52–300 g/m², A6R–SRA3 PF-7150 Paper feeder: 2 x 1,500 sheets, A4, 52–300 g/m², A4, B5, Letter

DF-7100: Inner finisher 500 sheets A4, 52–300 g/m², A6R–SRA3 Stapling up to 50 sheets A4 or 30 sheets A3 at 3 positions

DF-7120* Document finisher + AK-7110: 1,000 sheets A4, 52–300 g/m², A6R–SRA3, Stapling up to 50 sheets A4 or 30 sheets A3 at 3 positions

DF-7140* Document finisher + AK-7110: Main tray: 4,000 sheets A4, Sub tray: 200 sheets A4, 52–300 g/m², A6R–SRA3, Stapling up to 65 sheets A4 or 30 sheets A3 at 3 positions

DF-7150 + AK-7110 Main tray: 4,000 sheets A4, Sub tray: 200 sheets A4, 52–300 g/m², A6R–SRA3, Stapling up to 100 sheets A4 or 50 sheets A3 at 3 positions

AK-7110: Attachment kit for DF-7120, DF-7140 and DF-7150 100 sheets, 52–300 g/m², A6R–SRA3

* Bridge unit AK-7110 is required when using a finisher

PH-7C: Punch unit for DF-7120, DF-7140 and DF-7150

2-hole/4-hole, 52–300 g/m², A5R–A3

MT-730(B): Mailbox sorter for DF-7140

7 bins x 100 sheets A4, 50 sheets A3/B4, 60–163 g/m²

BF-730: Booklet and tri-folding unit for DF-7140

BF-9100: Booklet and tri-folding unit for DF-7150

JS-7100: 100-sheet internal job separator, 52–300 g/m², A6R – SRA3

JS-7110: 250-sheet Inner shift tray, 52–300 g/m², A6R – SRA3

PH-7120: Inner punch unit for inner finisher DF-7100

Banner Guide 10: Banner paper feeding guide, 10 sheets

HD-15: HDD 320 GB

HD-16: HDD 1 TB

NK-7120: Numeric keypad

Keyboard Holder 10

UG-33 AC: ThinPrint support

USB IC Card Reader + Card Authentication Kit (B) AC

IB-37: Wireless Network Interface (USB : 5GHz/2.4GHz)

IB-50: GB-Ethernet board 10 BaseT/100 BaseTX/1,000 BaseT

IB-51: Wireless LAN Interface (802.11b/g/n)

Platen cover Type (E)

1290/30: Low cabinet

Kyocera Document Solutions has championed innovative technology since 1934. We enable our customers to turn information into knowledge, excel at learning and surpass others. With professional expertise and a culture of empathetic partnership, we help organisations put knowledge to work to drive change.



Brisbane Business Equipment

Unit 1, 747 Fairfield Road,
Yerrongpilly 4105

Ph (07) 32559500

email: sales@bbe.net.au

