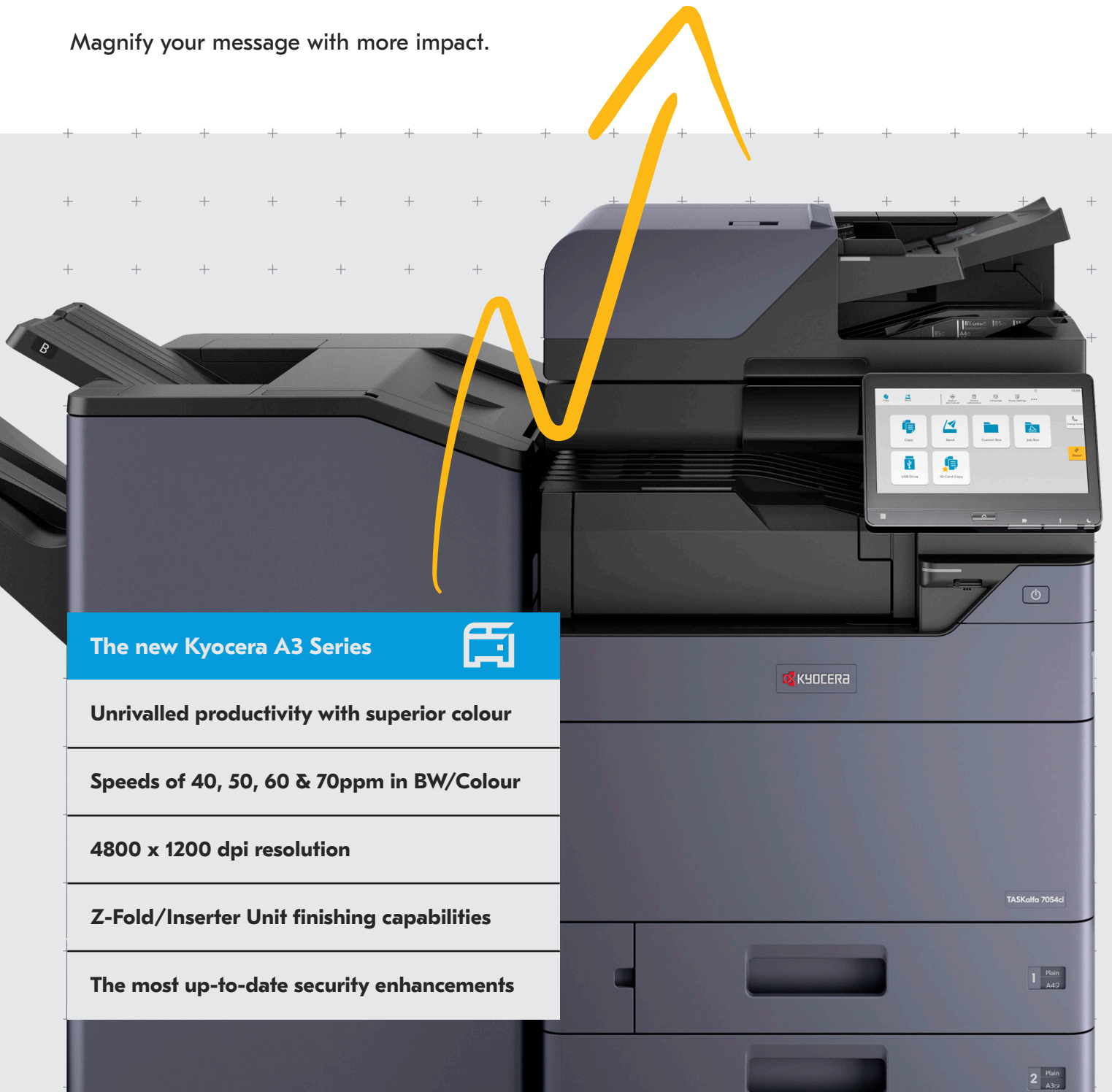




The Evolution Continues in Colour

Magnify your message with more impact.



The new Kyocera A3 Series



Unrivalled productivity with superior colour

Speeds of 40, 50, 60 & 70ppm in BW/Colour

4800 x 1200 dpi resolution

Z-Fold/Inserter Unit finishing capabilities

The most up-to-date security enhancements

KYOCERA

TASKalfa 7054ci

1 Plain
A4D

2 Plain
A3D

Make Change Your Edge

The new Kyocera TASKalfa A3 series was created for a new landscape of work. This range of robust, versatile devices has been built to last. Combining cutting-edge technology and Kyocera's expertise, these intuitive, user-friendly colour devices will drive your productivity to new levels.

Our new colour systems!



TASKalfa 4054ci

TASKalfa 5054ci

TASKalfa 6054ci

TASKalfa 7054ci



Print Speeds

40 ppm

50 ppm

60 ppm

70 ppm



Scan Speeds

up to 274 ipm

up to 274 ipm

up to 274 ipm

up to 274 ipm



Document Processor

up to 320 sheets

up to 320 sheets

up to 320 sheets

up to 320 sheets



Toner Capacity*
(B&W/colour)

30,000/20,000

40,000/24,000

40,000/24,000

40,000/24,000



Enhanced Security Features

Encrypted data with authentication technology and automatic security certification checks. Supports FIPS 140-2 and HCD-PP certification.

*Based on 5% coverage



Print in Flying Colours

Dive into a world of exquisite image quality. The devices in this new series offer superb definition, both in monochrome and full colour. Not only will time-pressured users benefit from the **Super Resolution** feature, that improves the quality of images at the touch of a button, but they can also opt for **High-Impact** and **Vibrant Printing** (4800 x 1200 dpi resolution).

Alongside dramatic colour, crisp black & white, and detailed graphics printing, these devices offer top-of-the-range scanning, input, and professional finishing options. In short, this new series goes beyond the requirements of even the most demanding workplace.

For outstanding image reproduction, look no further.

New Heights of Productivity

Now more than ever, companies are seeking devices that are more agile and robust, and ever-smarter ways of working. These new devices empower companies to maximise productivity like never before.

Re-energise the Way You Work



High Performance

Fast print and scan speeds for maximum efficiency.



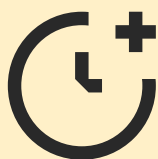
Paper Capacity

Less time filling paper trays means more time for quality work.



Digitisation

Transform your workflows faster while pivoting to a paperless workspace.



Durability

Long-lasting toners ensure professional quality that lasts.



Proven Quality

Our devices have earned industry recognition for their reliability.



Optimal Security

Enjoy some of the most advanced security technology on the market today.

This new TASKalfa series takes a holistic approach to workflows in the **modern workplace**.

By addressing and tackling pains at each stage of the document lifecycle, we have delivered a range of devices for today's businesses. A TASKalfa device can help turn past weaknesses and blind spots into **new value-adding opportunities for your organisation**.

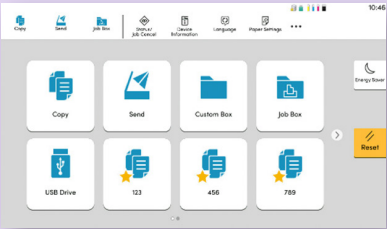
We have taken the complex and made it simple. As it should be.

An Effortless User Experience

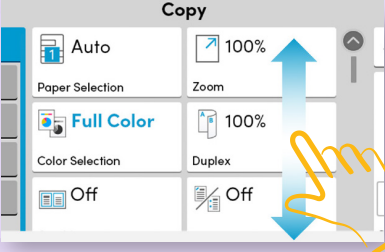
Over-complicated printer controls drain valuable time and can impact your overall productivity. The new TASKalfa series puts an end to that with a user interface that has been totally redesigned to **minimise confusion** and **maximise your capabilities**, for printing that is easy and intuitive.

Meet the New User Interface

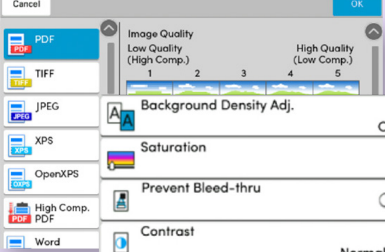
With standard colours and easy to understand icons, carrying out tasks at the printer has never been simpler.



Simple
Standardised icons and graphics make navigation intuitive and easy.



Intuitive
Emphasise important information and use gestures to select target items.



Efficient
Work quicker with fewer steps, along with quick-switch settings.

Higher Risks Mean Better Solutions

Security is a greater concern than ever before, with more large-scale cyberattacks hitting the headlines every day. Businesses must preemptively prepare for potential risks by equipping themselves with solutions that ensure data and networks are constantly protected.

These new devices come with a whole range of new security enhancements:



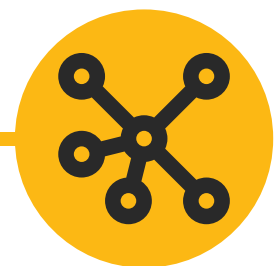
Certificates

Devices keep themselves up to date with latest security certificates, and use encrypted communications to validate their certificates. (SCEP & OCSP/CRL).



Encryption

Protect emails with authentication, digital signatures and encryption. A faster way to keep data secure in your network (S/MIME & TLS version 1.3).



Device Management

You will have the ability to log security events and monitor for malware, data leakage and other security breaches. (SIEM).

Kyocera's up-to-date security compliance shows our commitment to the highest standards of information security management.

Finish in Style

With the new TASKalfa A3 series, **it's your documents your way.**

Today's workspaces demand greater agility and media flexibility, and Kyocera has risen to the challenge with brand-new finishing capabilities for 60/70ppm devices.



ZF-7100 Z-Fold Option

This functionality enables you to add "z-folded" sheets into your documents. This includes diagrams, charts and other larger sheets that need to be folded into a 8.5" x 11" sized booklets. This can also be particularly useful for standalone applications when producing invoices, marketing flyers and brochures.

Staple Finishing Option

These new devices boasts 4,000 sheet staple finisher options that support 65 and 100 sheet stapling and 2/3 hole-punching for clean, professional looking output so that more jobs can be kept in-house even in the most demanding of work environments.

IS-7100 Inserter Unit Option

This presence of two trays enables users to feed pre-printed pages as potential front or back covers or sheet inserts. The Inserter Unit avoids the need for pre-printed sheets to go through the high-temperature fusing process at the MFP, thus ensuring that the pre-printed sheets won't get destroyed or melted.

Evolving Our Future

Keep your productivity high and sustainability higher.

Kyocera was built upon the principle of doing the right thing as a human being. In everything we do, we try to balance ecology and economy, and seek to make all of our growth sustainable.

This means that you can rest easy knowing that, while you're maximising productivity and efficiency within your business, you're also reducing your environmental impact.

Our TASKalfa devices makes it possible to combine eco-friendly printing with greener and more intelligent digital processes, so that your daily work has a reduced carbon footprint. Your growth doesn't have to cost the environment.

**We do more than just talk about sustainability.
Our actions speak for us.**



**New Toner Design Helps
Reduce Energy Consumption**



**Energy-saving
Sleep Mode**



**Increased
Eco-credentials**



**Increased
Productivity**



Your Pains. Our Solutions.

With the new TASKalfa series you get:



User-friendly Interface

Tablet-like functionality makes life easy. No more frustration at the printer!



Fast Print and Scan Speeds

Get the documents you want when you need them and watch your productivity soar.



Smart and Scalable Solutions

Get your team working as one with solutions that help workflows run smoothly and efficiently.



Devices You Can Rely On

Kyocera devices are built to last the test of time. Get ready to say goodbye to costly downtime!



Optimal Security

With in-depth security capabilities you can rest assured that your confidential data is safe with Kyocera.





TASKalfa 6054ci



A3 Colour Multifunctional

60/60 ppm for A4 (Colour/Mono)

4,800 x 1,200 dpi resolution

Innovative technology and unmatched user experience to drive your business

The TASKalfa 6054ci boosts business productivity securely thanks to its enhanced security features, high speed scanning, excellent media handling support and enhanced finishing capabilities with the inserter and Z-folding options.

Specifications

GENERAL

KYOCERA TASKalfa Laser Colour Multifunctional, HyPAS™ solution platform
Operation panel: 256.5 mm (10.1 inch) full-colour touch panel display, speaker for job notification, 15° - 90° swivel mounted
Engine speed: Up to 60/30 pages A4/A3 per minute, Duplex print/copy speed: 60 pages A4 per minute
Resolution: 4800dpi equivalent x 1200dpi (print) 600 dpi x 600 dpi (scan/copy)
Warm-up time: 17 seconds or less
Time to first print: 3.8/5.1 seconds or less in Mono/Colour
Time to first copy: 4.1/6.2 seconds or less in Mono/Colour (DP), approx. 3.4/4.4 or less in Mono/Colour (Platen)
CPU: ARM A53 (Quad Core) 1.6GHz
Memory: Standard 4GB +64GB SSD, Optional 320GB or 1TB HDD
Standard interfaces: USB 3.0 (Super-Speed USB), 4 x USB Host Interface, Gigabit Ethernet (10BaseT/100BaseTX/1000BaseT, IPv6, IPv4, IPsec, 802.3az support), optional Wi-Fi (IEEE 802.11a/b/g/n/ac), 2 eKUIO slots for optional internal print server or for optional fax system, slot for optional Wireless LAN, Slot for optional SD Card, NFC tag
Dimensions (W x D x H): 602mm x 665mm x 790mm
Weight: Approx. 95kg
Power source: AC 220–240V, 50/60Hz
Power consumption: Print Mode: 990W; Copy Mode: 990W;
Ready Mode: 45W; Lower Mode: 40W Sleep Mode: 0.5W
Noise (surface sound pressure level): ISO 7779 measurement distance of 1 meter)
Copying/Printing Mode in Colour: 73 dB(A) LpA
Stand-by: 35dB(A)
Safety standards: TÜV/GS, CE. This unit is manufactured according to ISO 9001 quality standard and ISO 14001 environmental standard.

PAPER HANDLING

All paper capacities quoted are based on paper thickness of max. 0.11mm. Please use paper recommended by Kyocera under normal environmental conditions.
Input capacity: Multi-purpose tray: 150 sheets, 52 - 300g/m2 (Banner 136–163 g/m2), A6R - SRA3 (320 x 450 mm), Banner max. 304.8 x 1,220 mm, Standard universal paper cassette: 2 x 500 sheet 52 - 300g/m2, Upper cassette A6R up to A4R, lower cassette A6R up to SRA3, Max. input capacity with options: 7150 sheets A4
Duplex: Standard supports 60–256g/m2, SRA3 to A6R
Output capacity: Standard 500 sheets face down, max. 5,000 sheets

PRINT FUNCTIONS

Controller language: PRESCRIBE
Emulations: PCL6 (PCL5c / PCL-XL), KPDL3 (PostScript 3 compatible), PDF Direct Print, XPS Direct Print and OpenXPS
Operating systems: All current Windows operating systems, Chrome OS, MAC OS X Version 10.9 or higher, Unix, Linux as well as other operating systems on request
Fonts/barcodes: 93 outline fonts (PCL), 136 fonts (KPDL 3), 4 fonts (Calibri), 4 fonts (Cambria), 1 Bitmap font, 45 types of one-dimensional barcodes, 1 type of two-dimensional barcode (PDF417)
Print features: Encrypted PDF 2.0 Direct Print, IPP printing, e-mail printing, WSD print, secure printing via SSL, IPsec, SNMPv3,

quick copy, proof and hold, private print, job storage and job management functionality, Super Resolution
Mobile printing support: AirPrint, Mopria, NFC, Direct Wi-Fi (optional), MyPanel and KYOCERA Mobile Print app for iOS and Android, Microsoft Cloud printing

COPY FUNCTIONS

Max. original size: A3/Ledger
Continuous copying: 1–9,999
Zoom range: 25–400% in 1% steps
Preset magnification ratios: 5 Reductions/5 Enlargements
Exposure mode: Manual: 17 steps
Image adjustments: Text + Photo, Photo, Text, Diagram/Map
Features: Scan-once-copy-many, electronic sort, 2int, 4int, image repeat, page numbering, cover mode, booklet copy, interrupt copy, form overlay, margin shift, auto cassette change, skip blank page, ID copy, Handwriting erase and highlight

SCAN FUNCTIONS

Functionality: Scan-to-email, Scan-to-FTP, Scan-to-SMB 3.0, Scan-to-USB Host, Scan-to-box, Network TWAIN, WSD scan (WIA Driver Network), DFS Scan, DSM Scan
Scan speed: 274 ipm (300 dpi, A4, duplex, with DP-7160/7170)
Scan resolution: 600, 400, 300, 200 dpi, 256 greyscales per colour (1,200 dpi via TWAIN and WIA driver only)
Max. scan size: A3, Ledger
Original recognition: Text, photo, text + photo, Light Text / Fine Line, optimised for OCR
File types: TIFF, PDF, PDF/A, JPEG, Open XPS, Encrypted PDF, High compression PDF, PDF/A-1a/b, PDF/A-2a/b/u, Searchable PDF(Optional), MS Office file(Optional)

FAX FUNCTIONS (OPTIONAL)

Compatibility: ITU-T Super G3
Modem speed: Max. 33.6kbps
Transmission time: Less than 3 seconds (JBIG)
Scanning speed: 2.0 seconds or less
Maximum original size: A3/Ledger, Banner: 1,600mm
Compression method: JBIG, MMR, MR, MH
Features: Network faxing, rotate transmission, rotate reception, encrypted transmission and reception, duplex fax reception, memory reception, mailbox, remote diagnostics, polling transmission and reception, broadcast, Optional Internet-fax, dual fax with second fax system 12

CONSUMABLES

Average continuous toner yield in accordance with 5% coverage A4
TK-8559K Toner Kit: Microfine toner black for 40,000 pages A4 TK-8559C, TK-8559M, TK-8559Y Toner Kits: Microfine toner cyan, magenta, yellow for 24,000 pages A4
Staples: SH-10: 5,000 x 3 staples for BF-730, DF-7100, DF-7120, BF-9100, SH-12: 5,000 x 3 staples for DF-7140, SH-14: 5,000 x 5 staples for DF-7150
WT-8500: Waste Toner Bottle: 40,000 sheets (in accordance with 5% coverage, b/w : colour = 7:3)

OPTIONS

Fax System 12
Internet Fax Kit (A) AC
Scan Extension Kit (A) AC: Scan to searchable PDF solution (embedded OCR), convert to PDF or MS Office (docx, xlsx, pptx)

Printing System 17: Fiery Controller

Printing System Interface Kit 15B: Interface board for Fiery
DP-7150: Document processor (Reversing), 140 sheets, 35–160 g/m2 (simplex), 50–120 g/m2 (duplex), A6R–A3, Banner up to 1,900 mm
DP-7160: Document processor (one-path duplex scanning), 320 sheets at 50 - 80 g/m2, 35–220 g/m2 (simplex), 50–220 g/m2 (duplex), A6R–A3, Banner up to 1,900 mm
DP-7170: Document processor (one-path duplex scanning with ultrasonic sensor), 320 sheets at 50 - 80 g/m2, 35–220 g/m2 (simplex), 50–220 g/m2 (duplex), A6R–A3, Banner up to 1,900mm
DT-730(B): Document tray
PF-7120: Side Deck: 3,000 sheets, A4, 60–300 g/m2
PF-7140 Paper feeder: 2 x 500 sheets, 52–300 g/m2, A6R–SRA3
PF-7150 Paper feeder: 2 x 1,500 sheets, A4, 52–300 g/m2, A4, B5, Letter
DF-7100: Inner finisher 500 sheets A4, 52–300 g/m2, A6R–SRA3 Stapling up to 50 sheets A4 or 30 sheets A3 at 3 positions
DF-7120* Document finisher + AK-7110: 1,000 sheets A4, 52–300 g/m2, A6R–SRA3, Stapling up to 50 sheets A4 or 30 sheets A3 at 3 positions
DF-7140* Document finisher + AK-7110: Main tray: 4,000 sheets A4, Sub tray: 200 sheets A4, 52–300 g/m2, A6R–SRA3, Stapling up to 65 sheets A4 or 30 sheets A3 at 3 positions
DF-7150* Document finisher + AK-7110: Main tray: 4,000 sheets A4, Sub tray: 200 sheets A4, 52–300 g/m2, A6R–SRA3, Stapling up to 100 sheets A4 or 50 sheets A3 at 3 positions
AK-7110: Attachment kit for DF-7120, DF-7140 and DF-7150 100 sheets, 52–300 g/m2, A6R–SRA3
 * Bridge unit AK-7110 is required when using a finisher

ZF-7100: Z-folding, Bi-folding, Inner and Outer tri-folding
IS-7100: Inserter, Cover and Backing sheet insertion, 52–300 g/m2, A6R–SRA3
AK-7120: Attachment kit for Z-folding unit
PH-7C: Punch unit for DF-7120, DF-7140 and DF-7150 2-hole/4-hole, 52–300 g/m2, A5R–A3
MT-730(B): Mailbox sorter for DF-7140 7 bins x 100 sheets A4, 50 sheets A3/B4, 60–163 g/m2
BF-730: Booklet and tri-folding unit for DF-7140
BF-9100: Booklet and tri-folding unit for DF-7150
JS-7100: 100-sheet internal job separator, 52–300 g/m2, A6R – SRA3
JS-7110: 250-sheet Inner shift tray, 52–300 g/m2, A6R – SRA3
PH-7120: Inner punch unit for inner finisher DF-7100
Banner Guide 10: Banner paper feeding guide, 10 sheets
HD-15: HDD 320 GB
HD-16: HDD 1 TB
NK-7120: Numeric keypad
Keyboard Holder 10
UG-33 AC: ThinPrint support
USB IC Card Reader + Card Authentication Kit (B) AC
IB-37: Wireless Network Interface (USB : 5GHz/2.4GHz)
IB-50: GB-Ethernet board 10 BaseT/100 BaseTX/1,000 BaseT
IB-51: Wireless LAN Interface (802.11b/g/n)
Platen cover Type (E)
1290/30: Low cabinet

Kyocera Document Solutions has championed innovative technology since 1934. We enable our customers to turn information into knowledge, excel at learning and surpass others. With professional expertise and a culture of empathetic partnership, we help organisations put knowledge to work to drive change.



Brisbane Business Equipment

Unit 1, 747 Fairfield Road,
Yerrongpilly 4105

Ph (07) 32559500

email: sales@bbe.net.au

